

Animations Disclaimer

We hope you find the information on our website and resources useful.

PowerPoint

This resource has been designed with animations to make it as fun and engaging as possible. To view the content in the correct formatting, please view the PowerPoint in “slide show mode.” This takes you from desktop to presentation mode. If you view the slides out of “slide show mode,” you may find that some of the text and images overlap each other and/or are difficult to read.

To enter slide show mode, go to the **slide show menu tab** and select either **from beginning** or **from current slide**.

Slides

This resource has been designed with animations to make it fun and engaging for children. To ensure the content has the correct formatting, please view the presentation in “present mode.” This takes you from edit mode to presentation mode. If you view the slides out of “present mode,” you may find that some of the text and images overlap each other and/or are difficult to read.

To enter present mode, go to the **“Present”** tab and select **“Present from beginning”** or simply click **“Present”** to play from the current slide.

Aquatic Biome

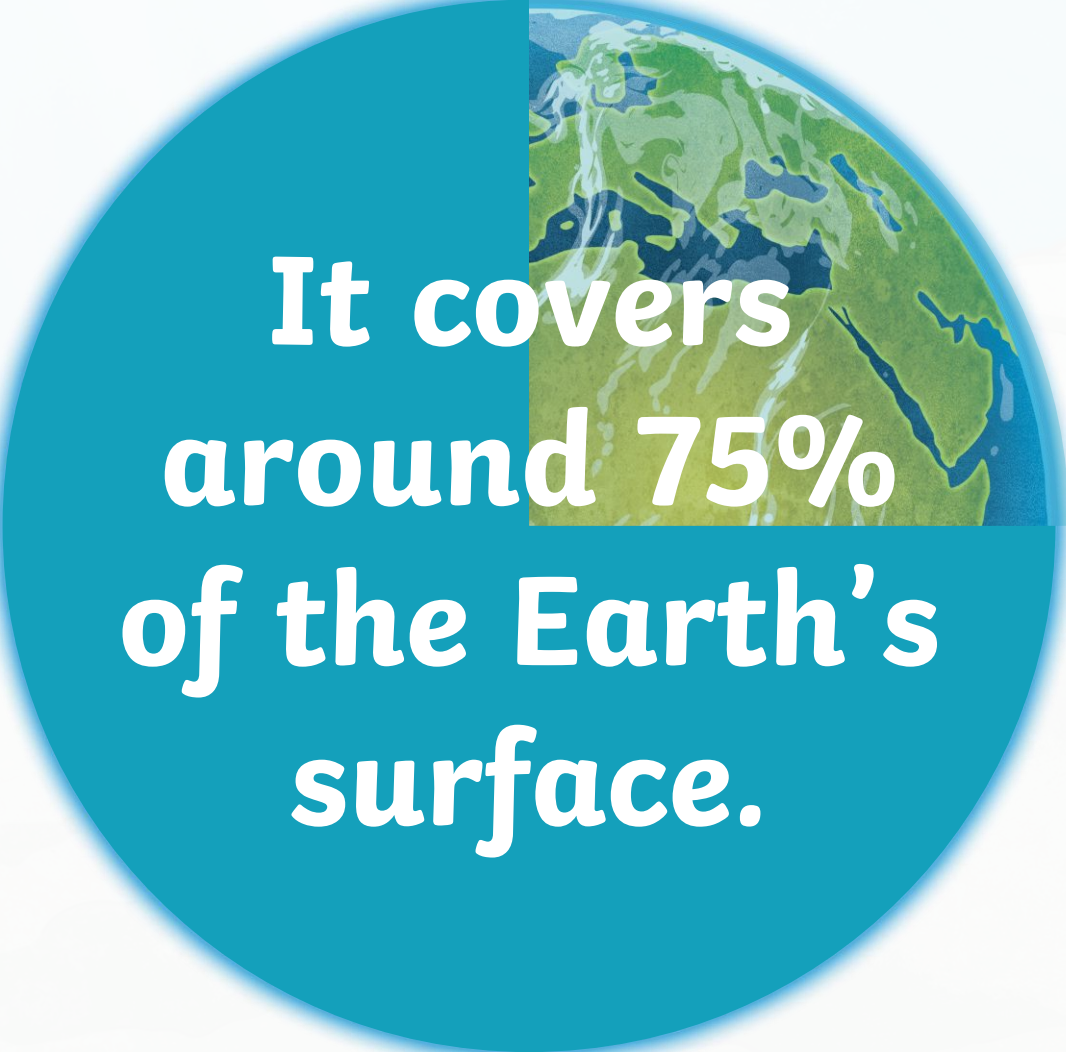
Aquatic Biome



The aquatic biome is the largest biome on Earth.



Aquatic Biome



**It covers
around 75%
of the Earth's
surface.**

Aquatic Biome

The aquatic biome is divided into two major categories:

Freshwater

The freshwater biome includes rivers, lakes, creeks, and ponds.

Marine

The marine biome consists of all of the Earth's oceans.

Aquatic Biome



Less than **20%**
of the aquatic
biome areas are
freshwater.

Aquatic Biome



**The majority are marine
biome areas.**



Think About it

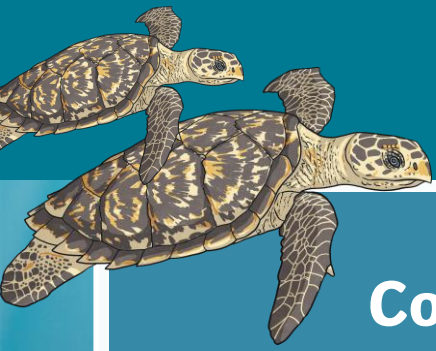
Is there anything that surprises you about the aquatic biome?

Freshwater

Freshwater biomes are an important source of water for living creatures. We, as humans, depend upon freshwater for our survival. Freshwater ecosystems are on every continent in the world.



Freshwater



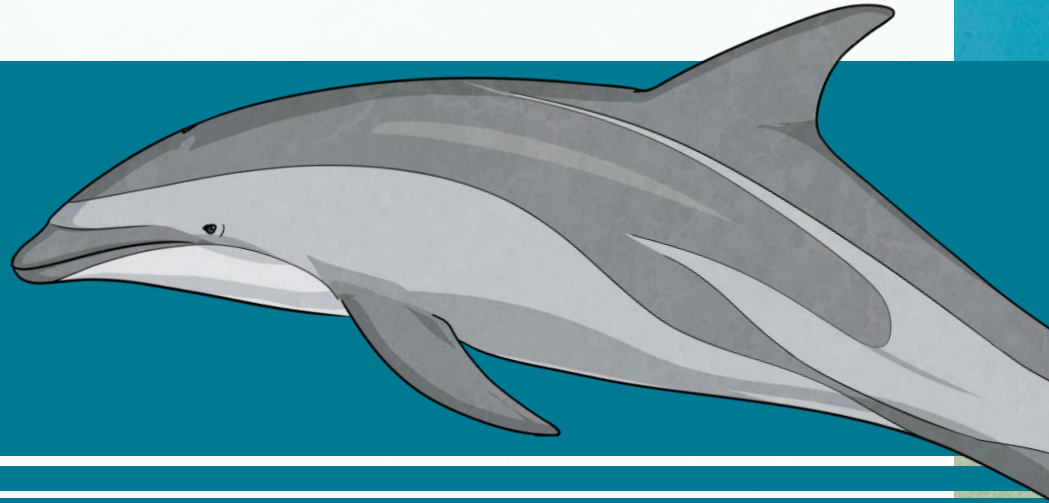
Common animals in freshwater biomes include fish, mollusks, and turtles.

Some land mammals also depend on freshwater biomes like beaver and bears.



Marine

The world's four oceans, Atlantic, Pacific, Arctic, and Indian, make up the marine biome. The marine biome covers so much of the Earth's surface that it even helps regulate its climates.



Because the oceans are so different, the animals found in them are diverse.
What is your favorite ocean animal?

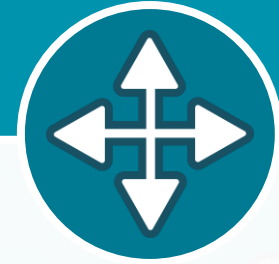
Think



Pair



Share

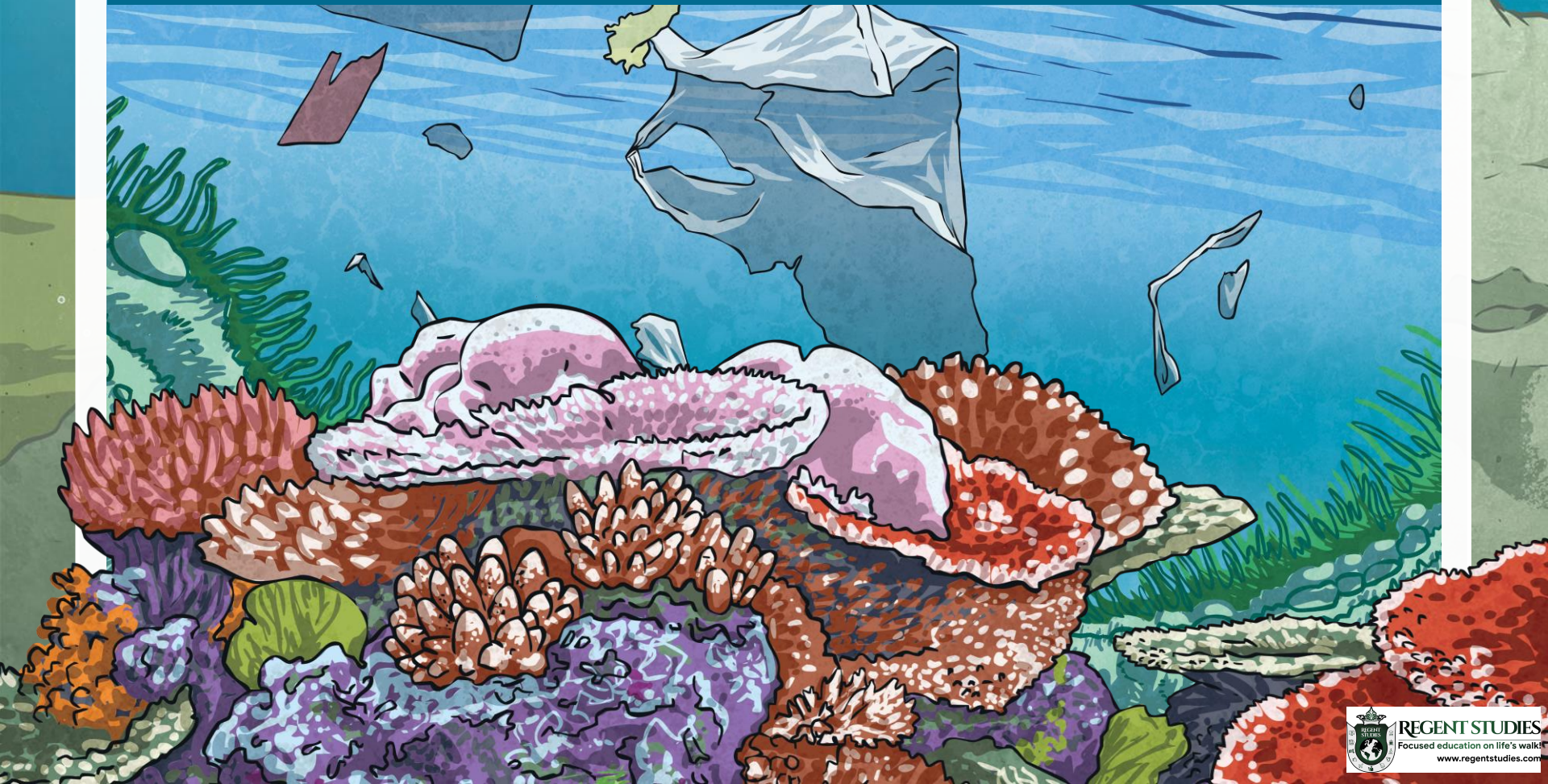


What aquatic biome have you visited or do you live near? Is it a freshwater or saltwater biome? What animals and plants did you observe there?

Threats to the Aquatic Biome

Further, unsustainable fishing can severely damage the aquatic biome.

change eating patterns, hunting patterns, and more.



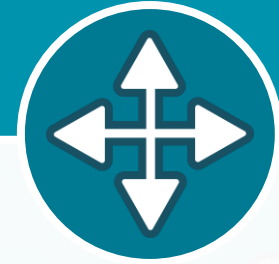
Think



Pair



Share



What can you do to help reduce threats to aquatic biomes? Give at least three specific ideas and explain why they would help.

Fishing

Humans have sought out and settled near aquatic biomes out of necessity for freshwater and food. Fish are a huge part of the world's protein source in human diets. For this reason, many who live near the ocean or freshwater biomes are in the fishing industry.

Fishing can be done responsibly, and it is always a good idea to know which fish are sustainably caught. There are several reputable organizations to help consumers decide which fish to eat.

What is your favorite fish to eat?

